

# Boob sled

for breast awareness

*Healthscope hospitals back The Pink Polar Expedition in support of the McGrath Foundation*

**P**acific Private Hospital patient and two-time breast cancer survivor Kate Carlyle is no stranger to challenges. Ms Carlyle is undergoing chemotherapy at Healthscope's Pacific Private Hospital for the treatment of breast cancer.

At the same time, Ms Carlyle has taken on an additional challenge to raise breast awareness and \$1 million for the McGrath Foundation.

In support of Ms Carlyle, Gold Coast veterinarian and part-time adventurer Geoff Wilson will embark on The Pink Polar Expedition in November - a gruelling 3,400 kilometre trek across Antarctica.

As he battles the extreme Antarctic conditions, Mr Wilson will haul a giant pink 'boob sled' in a bid to encourage women to be breast aware.

If successful, Mr Wilson will be the first Australian to do a solo, unassisted polar crossing. Mr Wilson also hopes to beat the world record time of 64 days.

All funds raised from The Pink Polar Expedition will help the McGrath Foundation increase breast awareness in young women and place specially-trained breast care nurses in communities across Australia.

A team of supporters, including staff at Healthscope's Allamanda Private Hospital, are helping the pair achieve their \$1 million fundraising target.

Allamanda Private Hospital is hosting a gala charity ball at the Surfers Paradise Marriott Resort & Spa in August. All proceeds from the Allamanda Pink Polar Gala will support the McGrath Foundation.

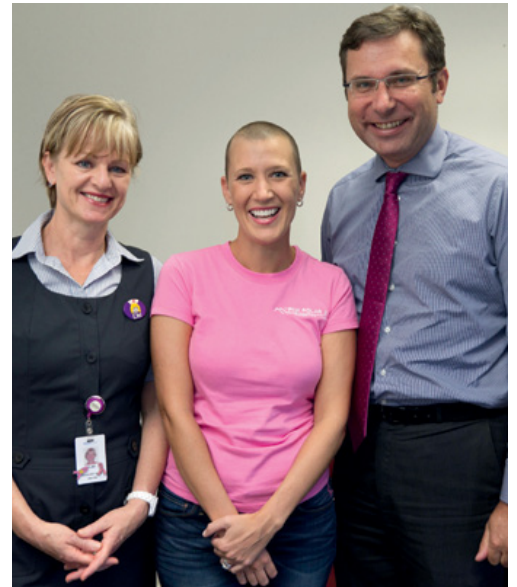
Donate to The Pink Polar Expedition online at [www.pinkpolar.com.au](http://www.pinkpolar.com.au). All funds go directly to the McGrath Foundation. 

*By Kellie Furey*





*“As he battles the extreme Antarctic conditions, Mr Wilson will haul a giant pink ‘boob sled’ in a bid to encourage women to be breast aware”*



Pacific Private Hospital Oncology Nurse Unit Manager Elke Goransson, Kate Carlyle and Dr Keith Horwood

Kate Carlyle and Geoff Wilson with the boob sled